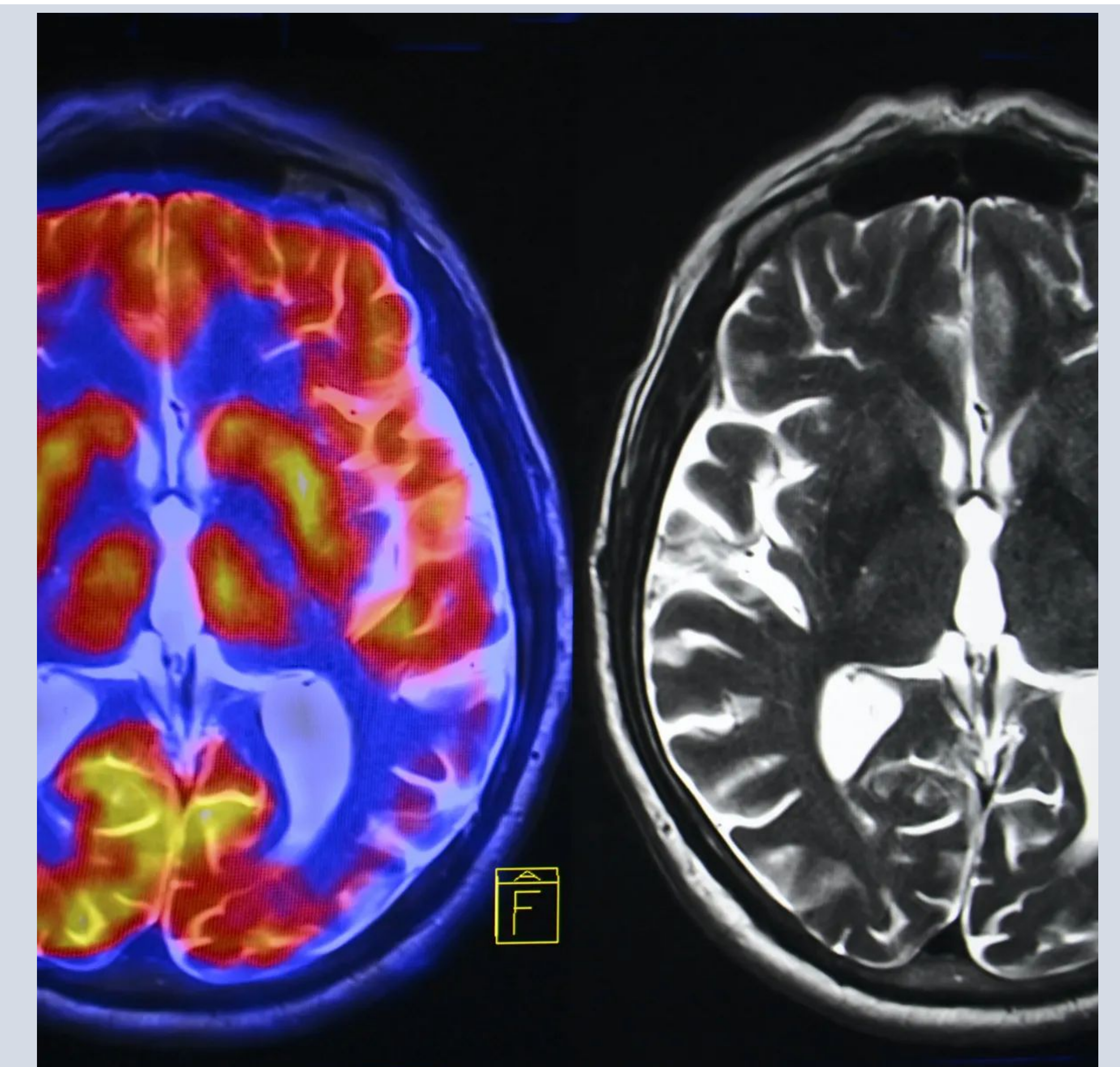
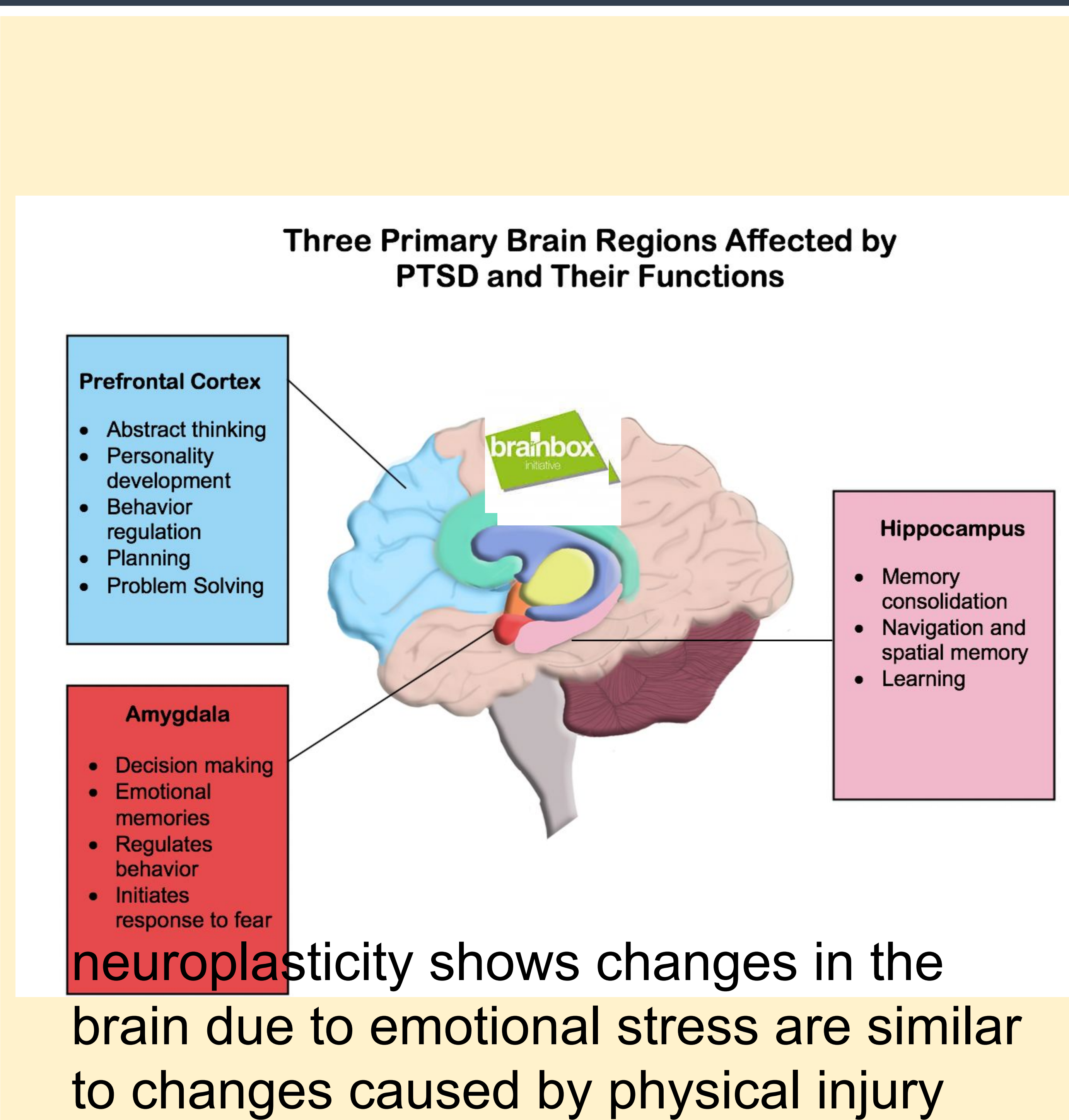
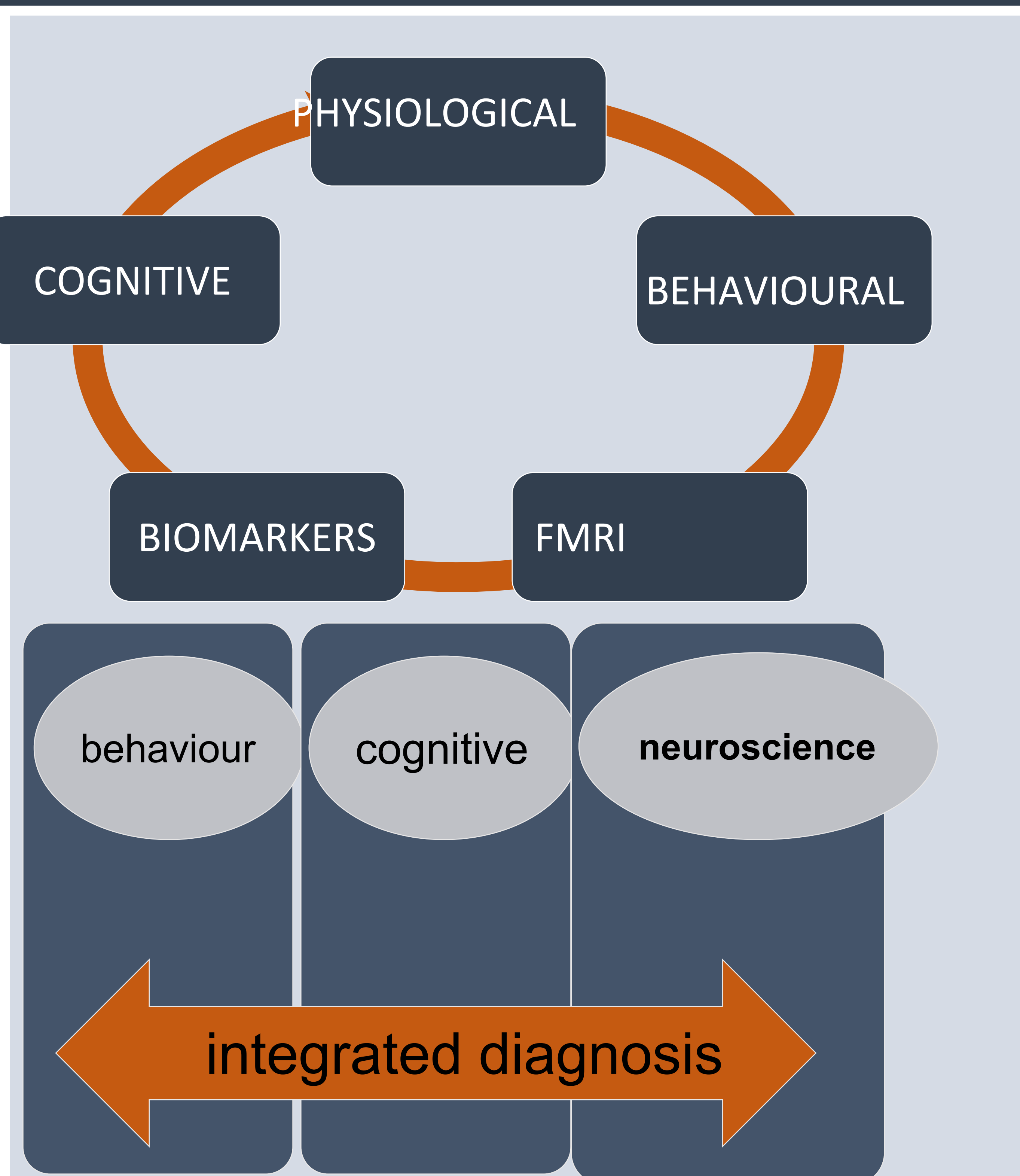


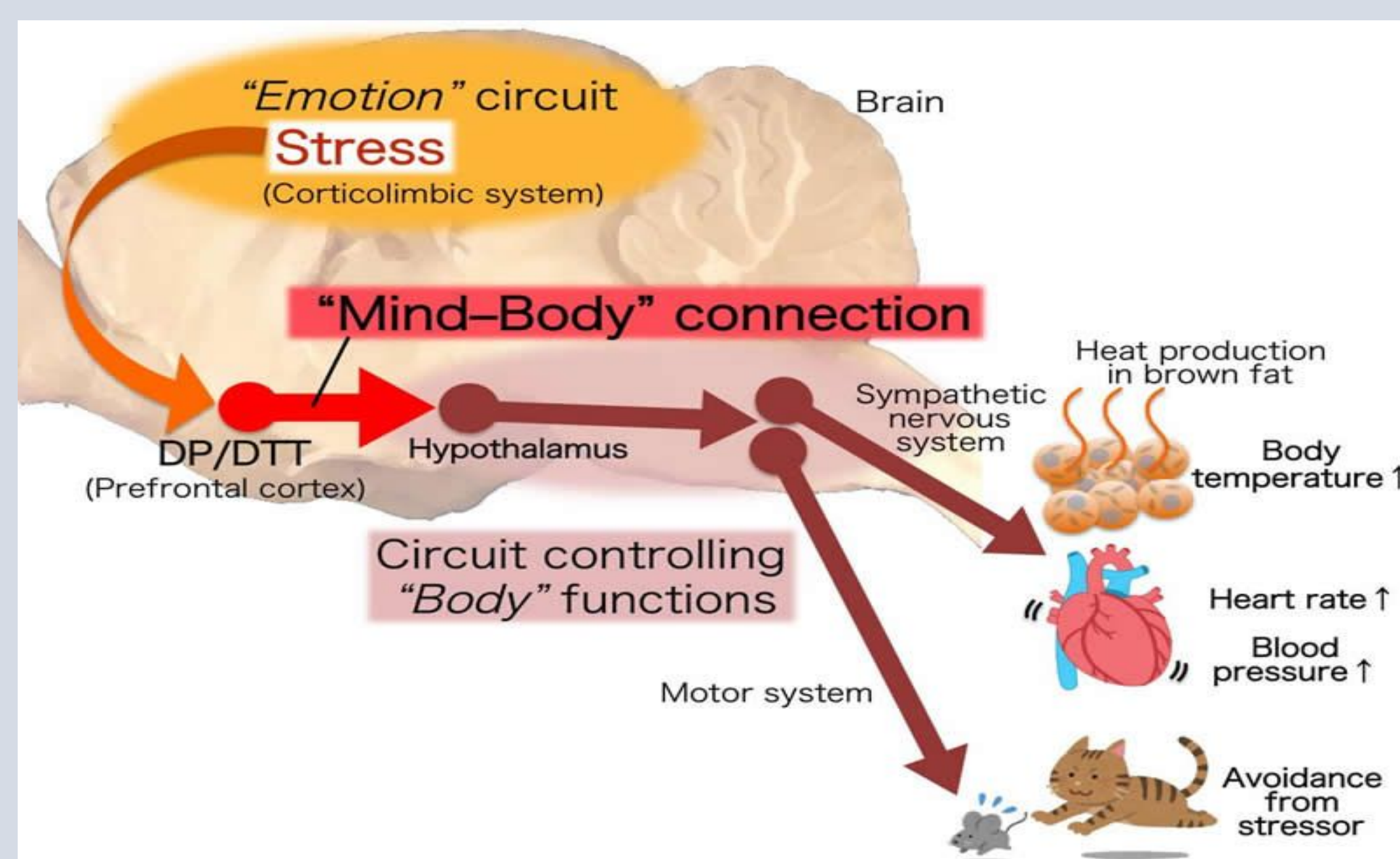
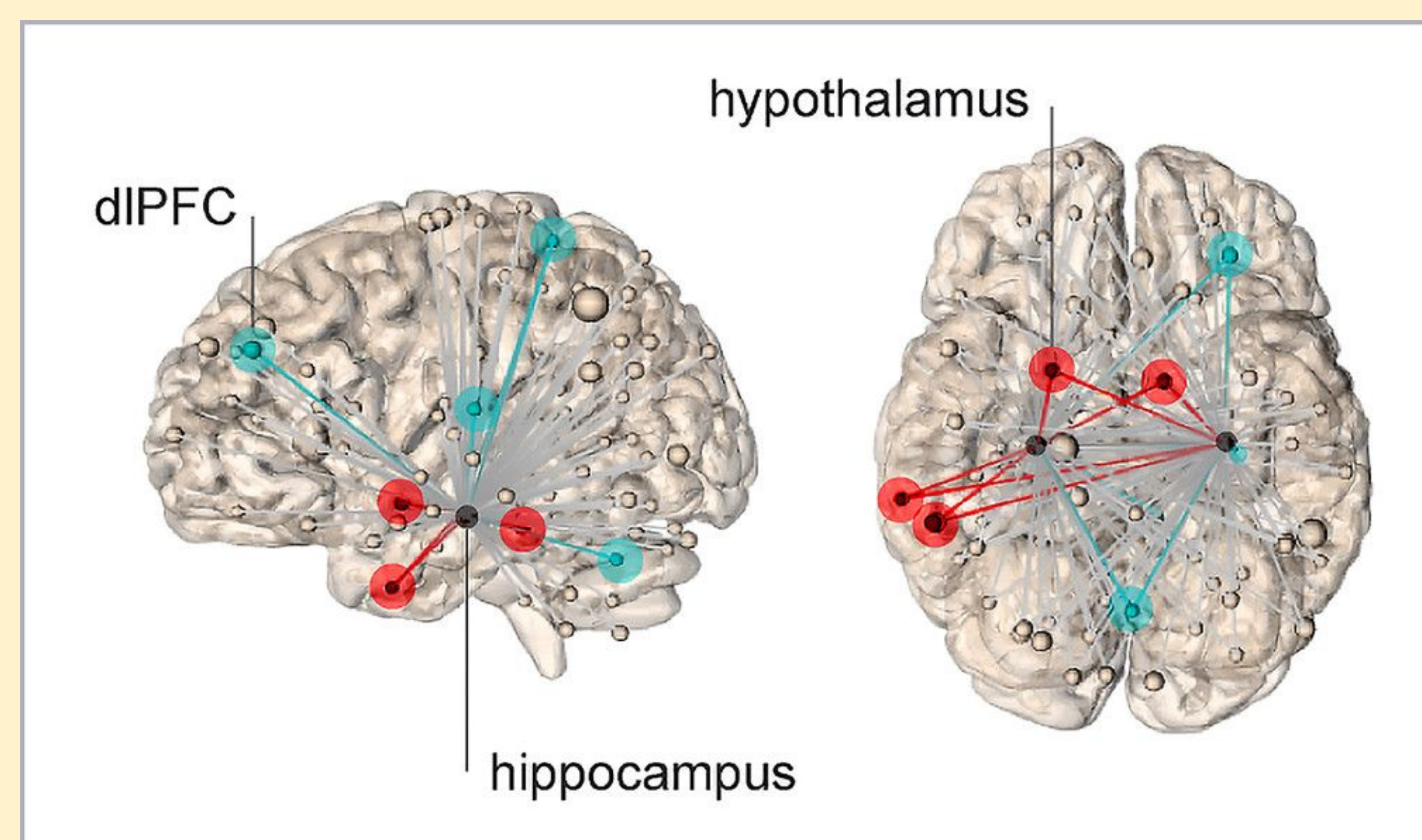


INTEGRATED DIAGNOSIS FOR DISORDERS OF CONSCIOUSNESS

DOC (wakefulness and awareness) are typically caused by physical trauma or injury. DOC can also be caused by emotional and psychological abuse and stress caused by cognitive dissonance, An integrated diagnostic tool based on cognitive behavioural and neuroscience approaches is proposed



SUMMARY: Docs causes are related to brain injury or physical trauma, however by comparing the brain images of patients affected by other symptoms such as PTSD, AUTISM, NARCOLEPSY AND DEPRESSION, comparable effects can be observed. In this work I am researching an integrated diagnosis approach that can broaden the spectrum of symptoms and treatments for DOCS



PAOLA DI MAIO, PhD (paola.dimaio@gmail.com) Senior researcher in Informatics, early stage researcher in Neuroscience
CENTER FOR SYSTEMS KNOWLEDGE REPRESENTATION AND NEUROSCIENCE -

First Presented at the Interdisciplinary Neuroscience Symposium Academia Sinica Taipei 2020